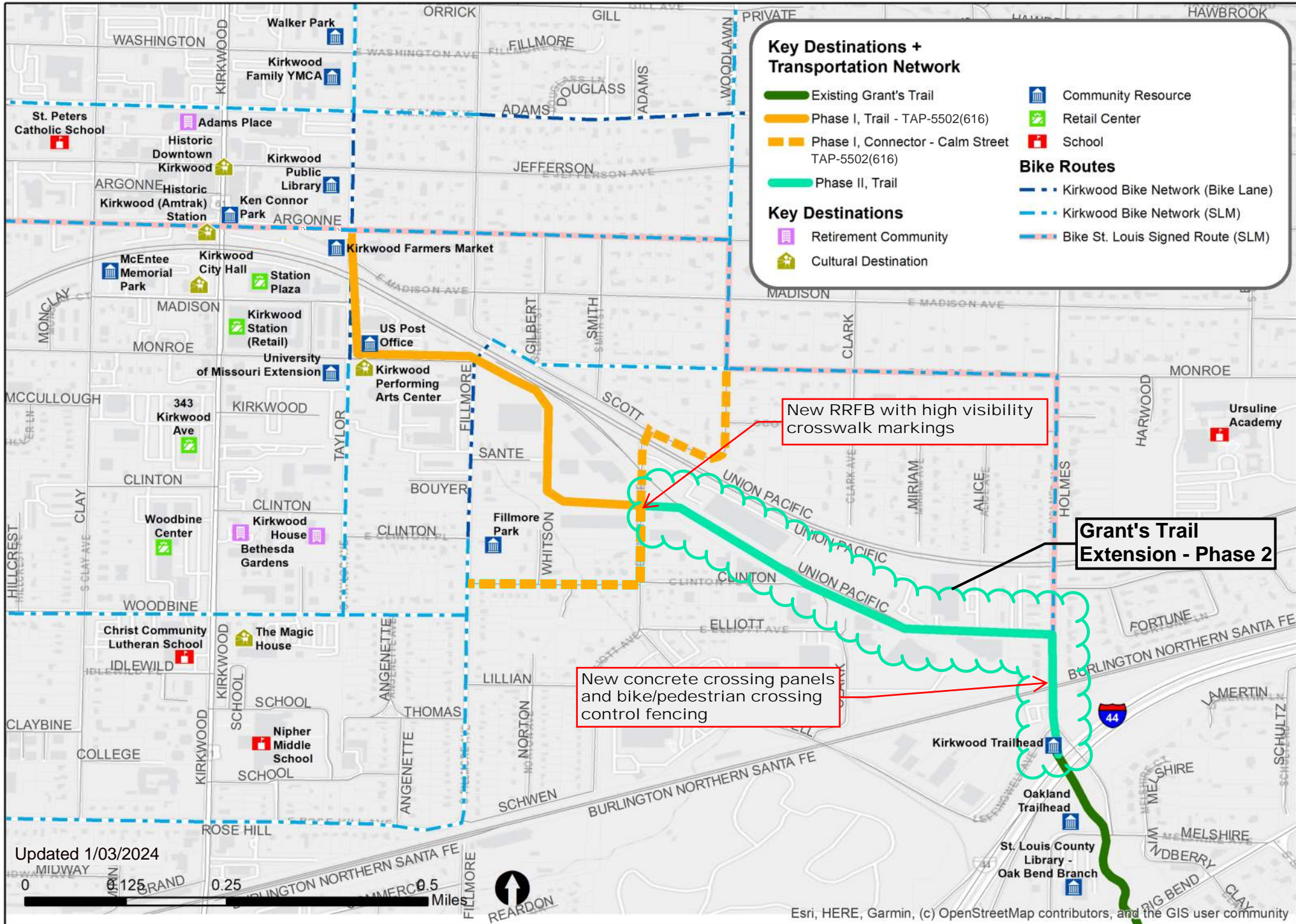


Detailed Map - Grant's Trail Extension - Phase 2



Surface Transportation Block Grant Program (STP-S)
Active Transportation- Project Application

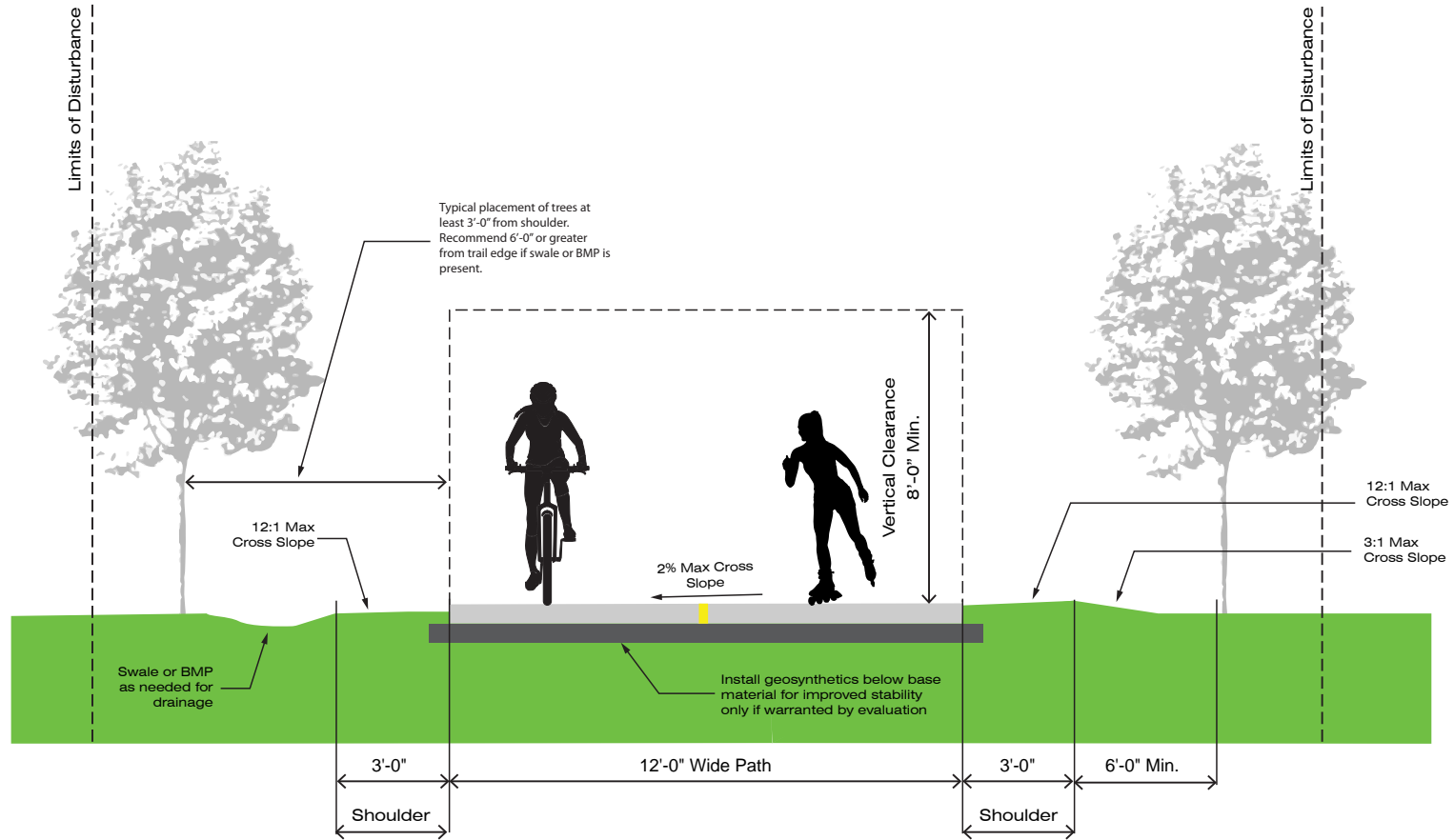
Grant's Trail Extension (Phase 2)

ATTACHMENT B:
Typical Sections

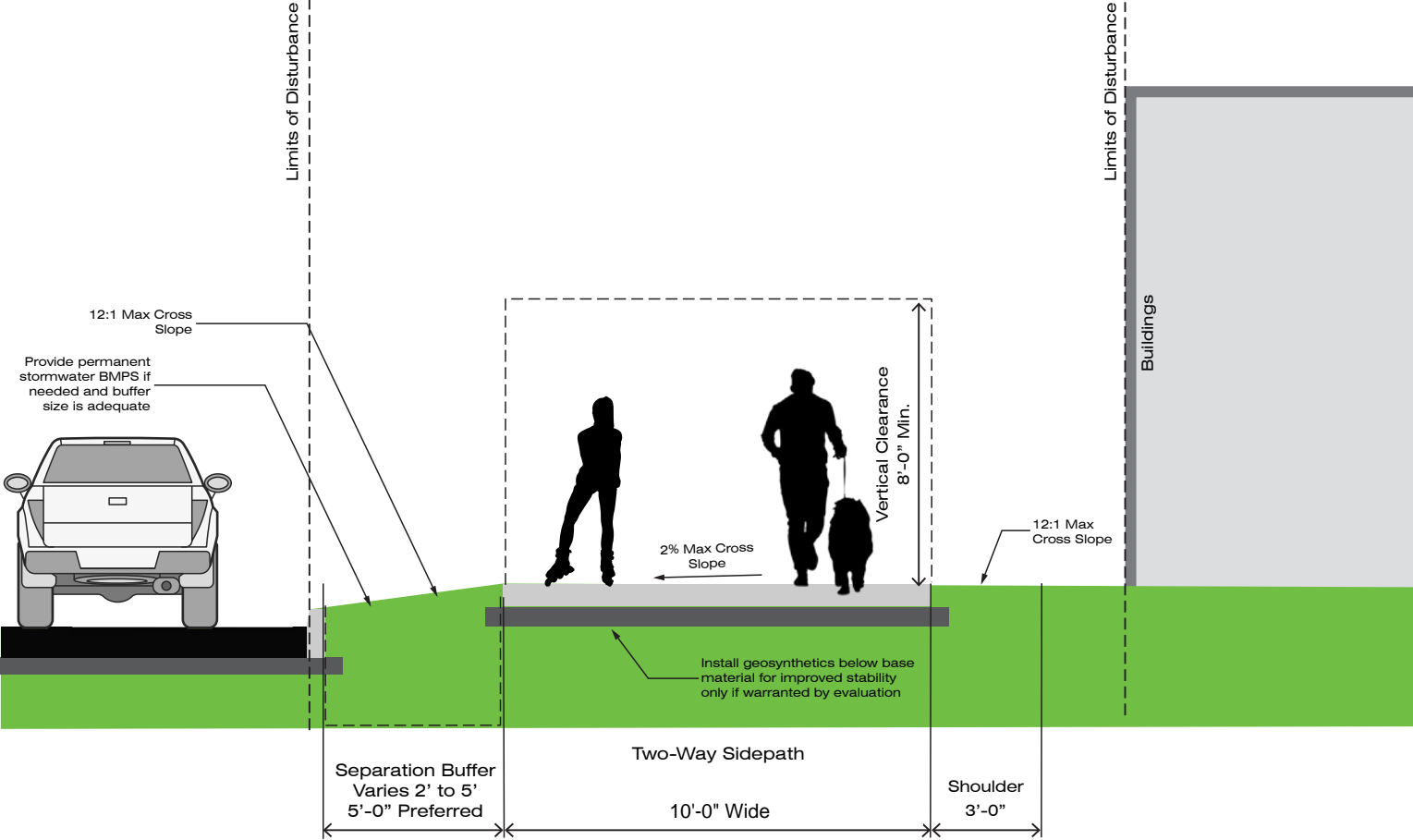
City of Kirkwood, Missouri
139 South Kirkwood Road
Kirkwood, MO 63122



GREENWAY TRAIL



SIDEPATH



APPENDIX B:


GRANT'S TRAIL EXTENSION PHASE 2

CONCEPTUAL DESIGN

NO.	DATE	REVISION

PRELIMINARY

Name: _____
License No: _____
Expiration Date: _____



**HORNER
SHIFFRIN**

401 S. 18TH ST., STE. 400 SAINT LOUIS, MO 63103-2296
314-531-4321 • FAX 314-531-6868 • WWW.HORNERSHIFFRIN.COM
DISCIPLINE: PROFESSIONAL ENGINEERING
SERVICAL STATE: MISSOURI
EXPIRATION DATE: DECEMBER 31, 2022

GRANT'S TRAIL -
CONCEPTUAL DESIGN
(APPENDIX B)

PHASE 2 - COVER SHEET

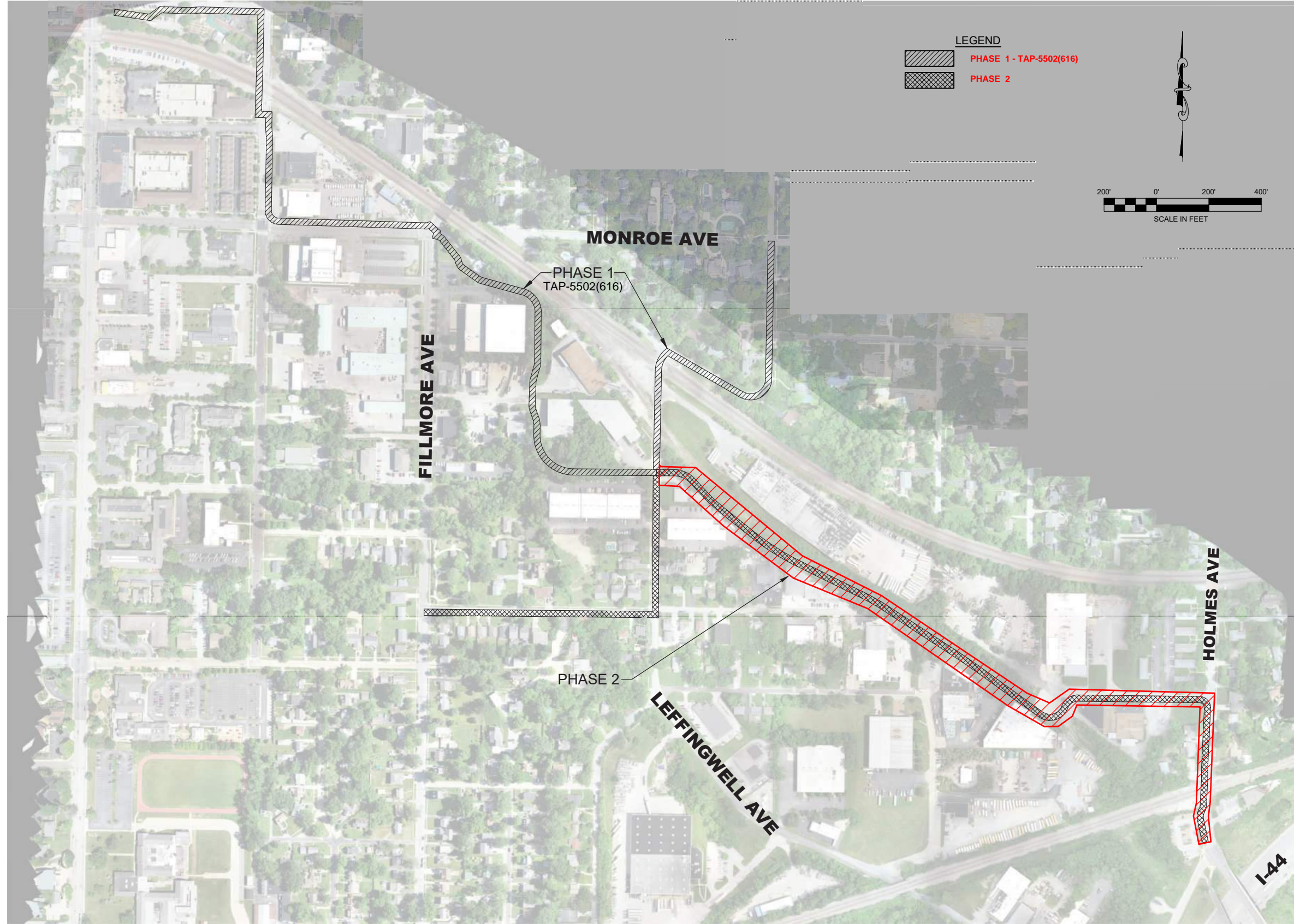


DATE: 1/26/2024

DESIGNED:
DRAWN:
CHECKED:

JOB NO. 2111900

SHEET
COV-PH2



Name: _____		NO.	DATE	REVISION
License No. _____				
Expiration Date: _____				
PRELIMINARY				

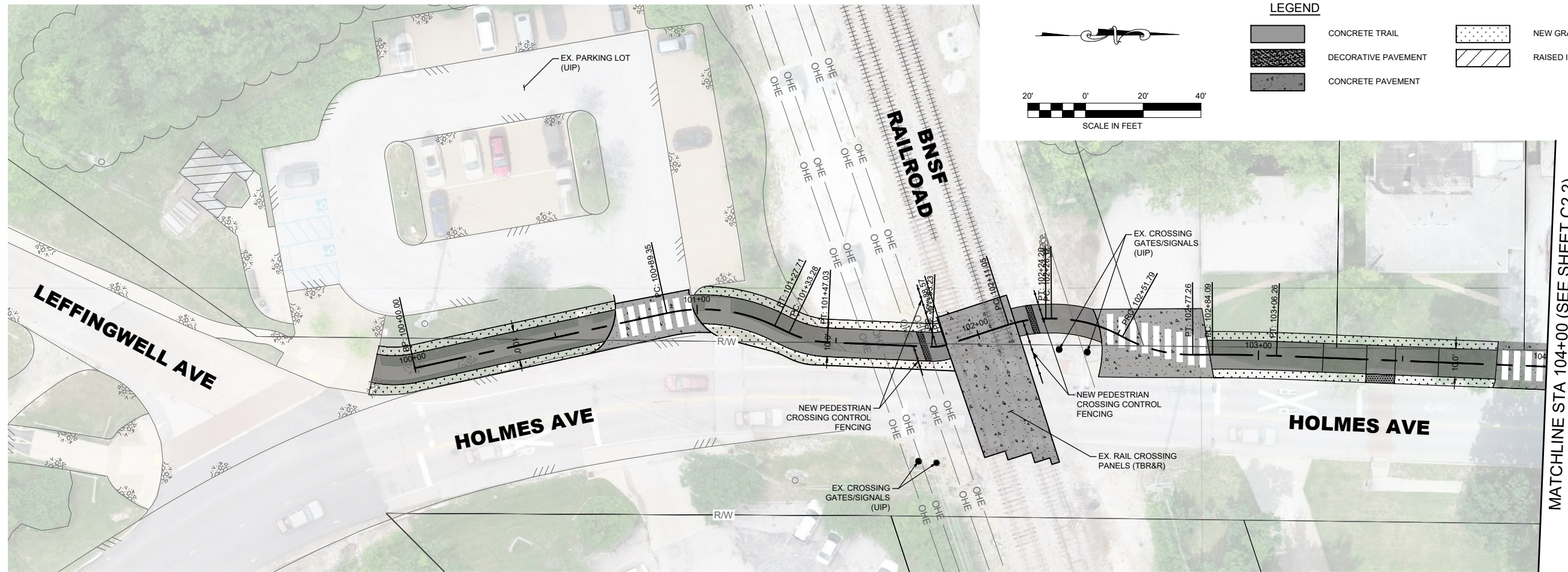
HORNER SHIFRIN
 401 S. 18TH ST., STE. 400 SAINT LOUIS, MO 63103-2296
 314-531-4321 • FAX 314-531-6868 • WWW.HORNERSHIFRIN.COM
 DISCIPLINE: PROFESSIONAL ENGINEERING
 CERTIFICATE NO. 000192
 EXPIRATION DATE: DECEMBER 31, 2022

**GRANT'S TRAIL -
 CONCEPTUAL DESIGN
 PHASE 2
 (APPENDIX B)
 OVERALL PLAN**



DATE: 1/26/2024
 DESIGNED:
 DRAWN:
 CHECKED:
 JOB NO. 2111900

SHEET
C0.1



MATCHLINE STA 104+00 (SEE SHEET C2.2)

LEGEND

- CONCRETE TRAIL
- DECORATIVE PAVEMENT
- CONCRETE PAVEMENT
- NEW GRASS
- RAISED INTERSECTION

PRELIMINARY

Name: _____
 License No. _____
 Expiration Date: _____

HORNER SHIFRIN

401 S. 18TH ST., STE. 400 SAINT LOUIS, MO 63103-2296
 314-531-4321 • FAX 314-531-6868 • WWW.HORNERSHIFRIN.COM
 DISCIPLINE: PROFESSIONAL ENGINEERING
 SERVICE AREA: ALL STATES
 EXPIRATION DATE: DECEMBER 31, 2022

**GRANT'S TRAIL -
 CONCEPTUAL DESIGN
 (APPENDIX B)**

PHASE 2 - PLAN SHEETS



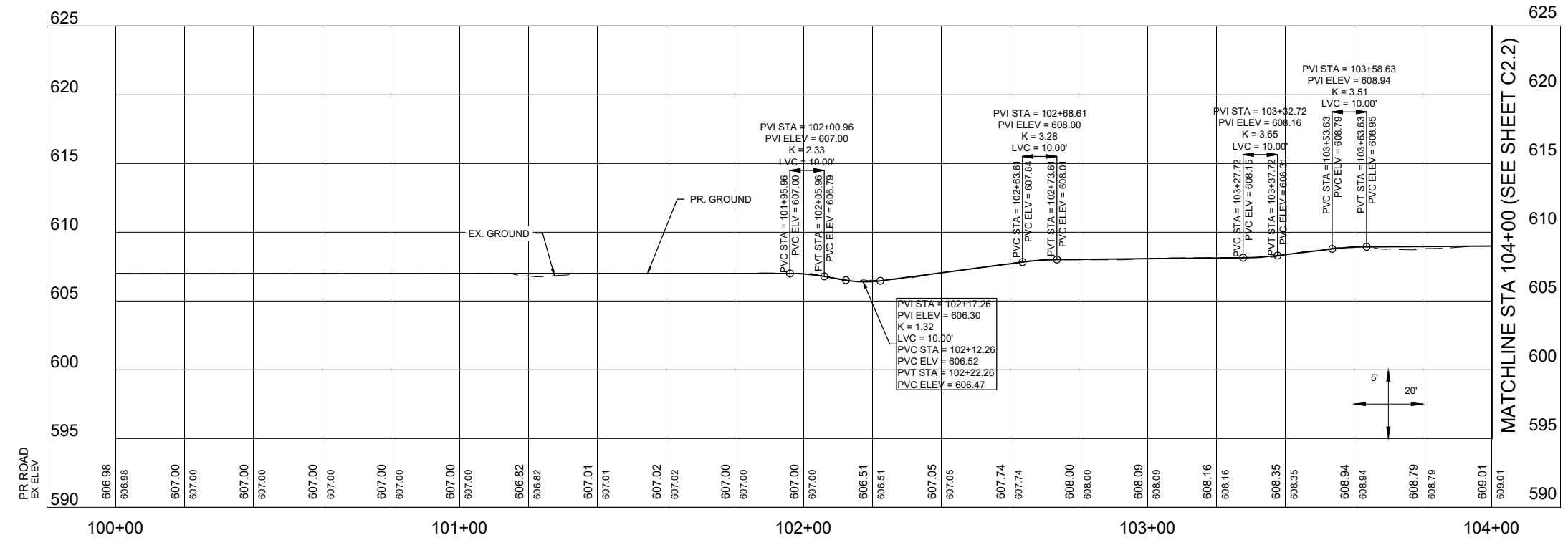
DATE: 8/17/2022

DESIGNED:
 DRAWN:
 CHECKED:

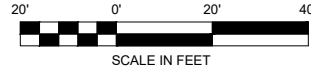
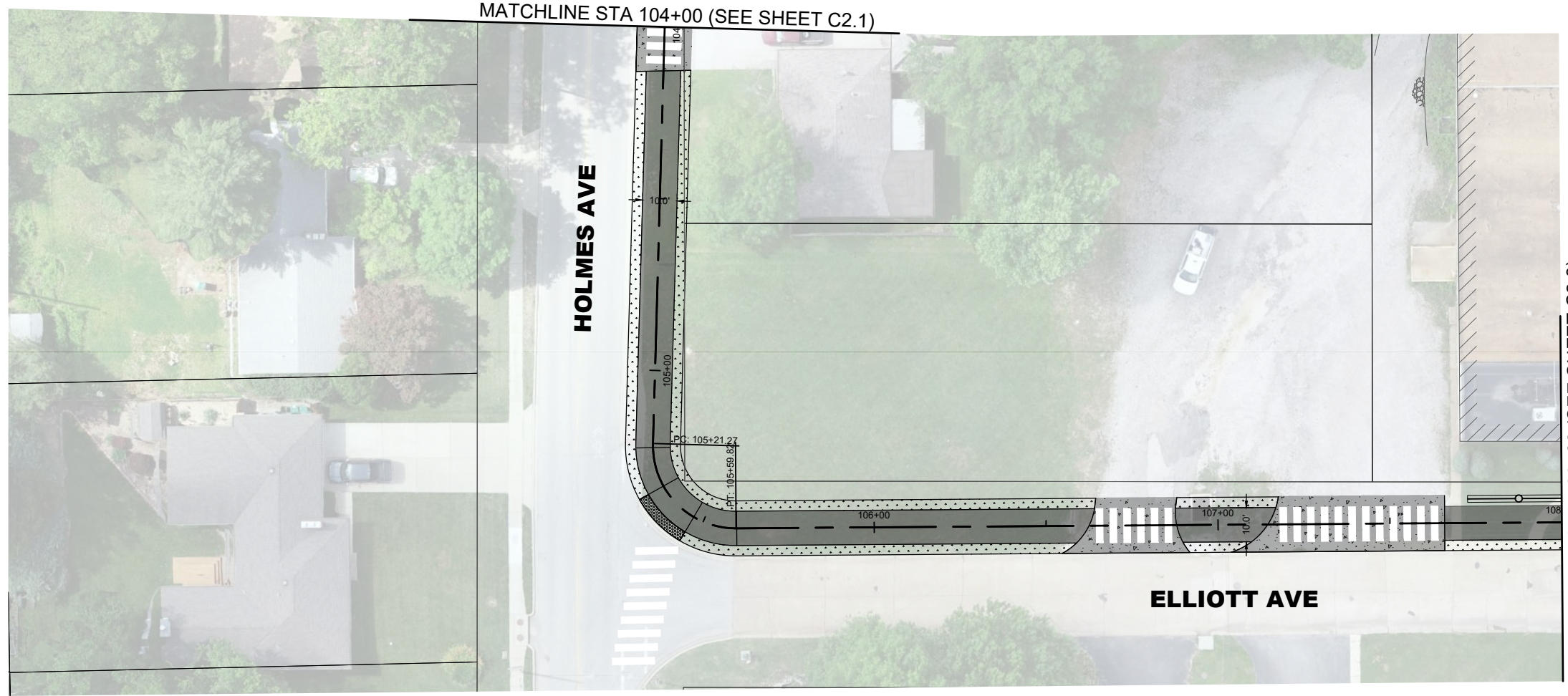
JOB NO. 2111900

SHEET

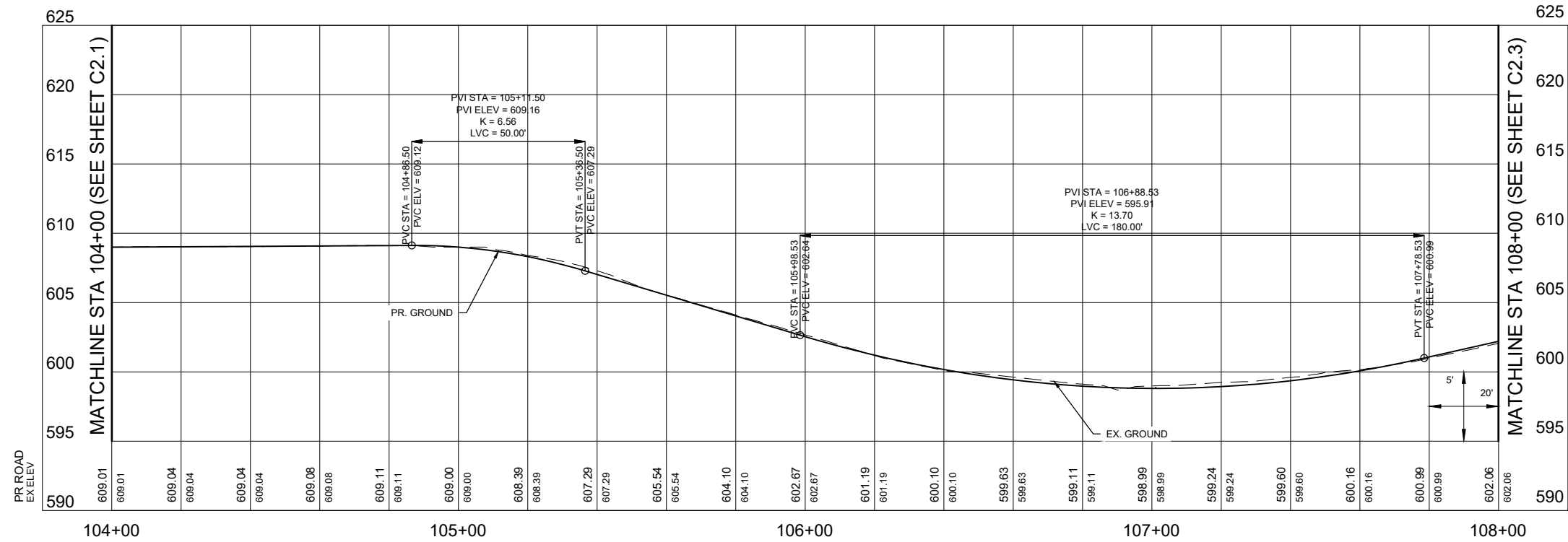
C2.1



MATCHLINE STA 104+00 (SEE SHEET C2.2)



- LEGEND**
- CONCRETE TRAIL
 - DECORATIVE PAVEMENT
 - CONCRETE PAVEMENT
 - NEW GRASS
 - RAISED INTERSECTION



NO.	DATE	REVISION

PRELIMINARY

HORNER SHIFRIN
 401 S. 18TH ST., STE. 400 SAINT LOUIS, MO 63103-2286
 314-531-4321 • FAX 314-531-6868 • WWW.HORNERSHIFRIN.COM
 DISCIPLINE: PROFESSIONAL ENGINEERING
 SERVICE AREA: ALL STATES
 EXPIRATION DATE: DECEMBER 31, 2022

**GRANT'S TRAIL -
 CONCEPTUAL DESIGN
 (APPENDIX B)
 PHASE 2 - PLAN SHEETS**

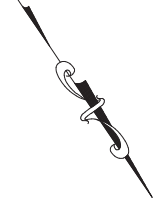


DATE: 8/17/2022
 DESIGNED:
 DRAWN:
 CHECKED:
 JOB NO. 2111900

SHEET
C2.2

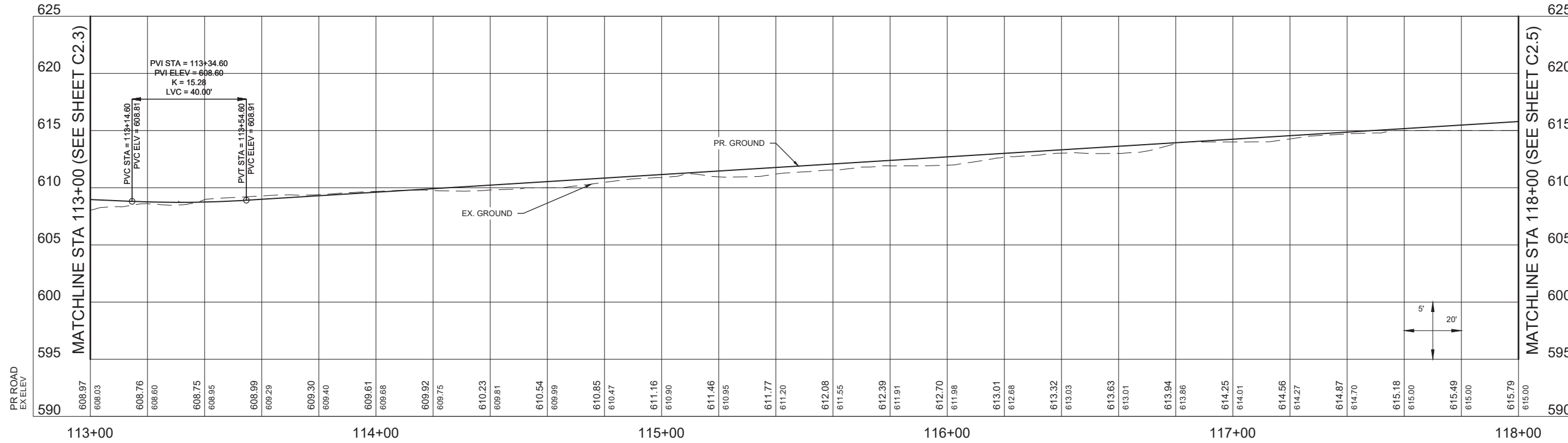
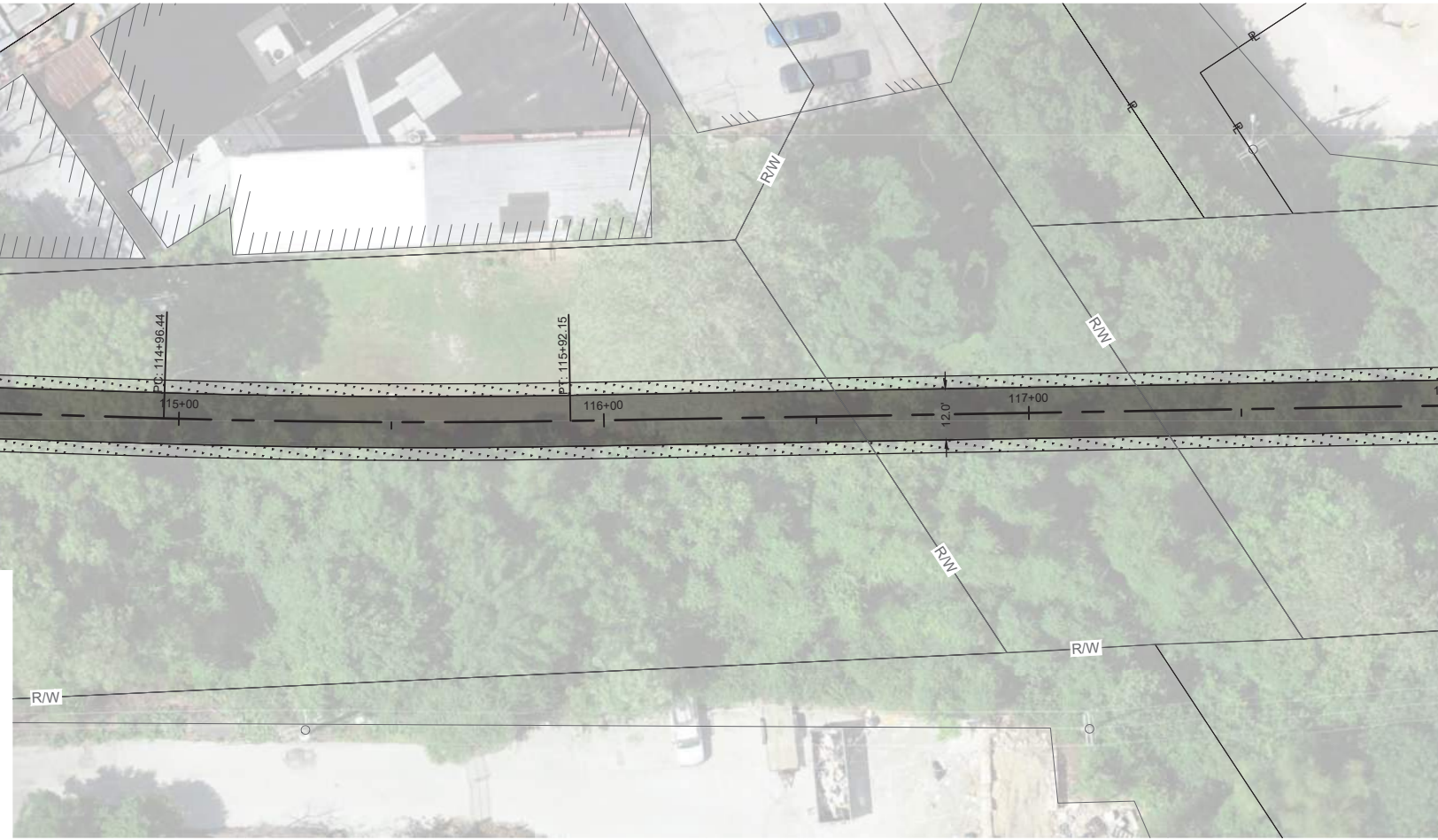
MATCHLINE STA 113+00 (SEE SHEET C2.3)

MATCHLINE STA 118+00 (SEE SHEET C2.5)



LEGEND

- CONCRETE TRAIL
- DECORATIVE PAVEMENT
- CONCRETE PAVEMENT
- NEW GRASS
- RAISED INTERSECTION



NO.	DATE	REVISION

PRELIMINARY

Name:
License No:
Expiration Date:

HORNER SHIFRIN
 401 S. 18TH ST., STE. 400 SAINT LOUIS, MO 63103-2296
 314-531-4321 • FAX 314-531-6868 • WWW.HORNERSHIFRIN.COM
 DISCIPLINE: PROFESSIONAL ENGINEERING
 SERVICE AREA: ALL STATES
 EXPIRATION DATE: DECEMBER 31, 2022

**GRANT'S TRAIL -
 CONCEPTUAL DESIGN
 (APPENDIX B)
 PHASE 2 - PLAN SHEETS**

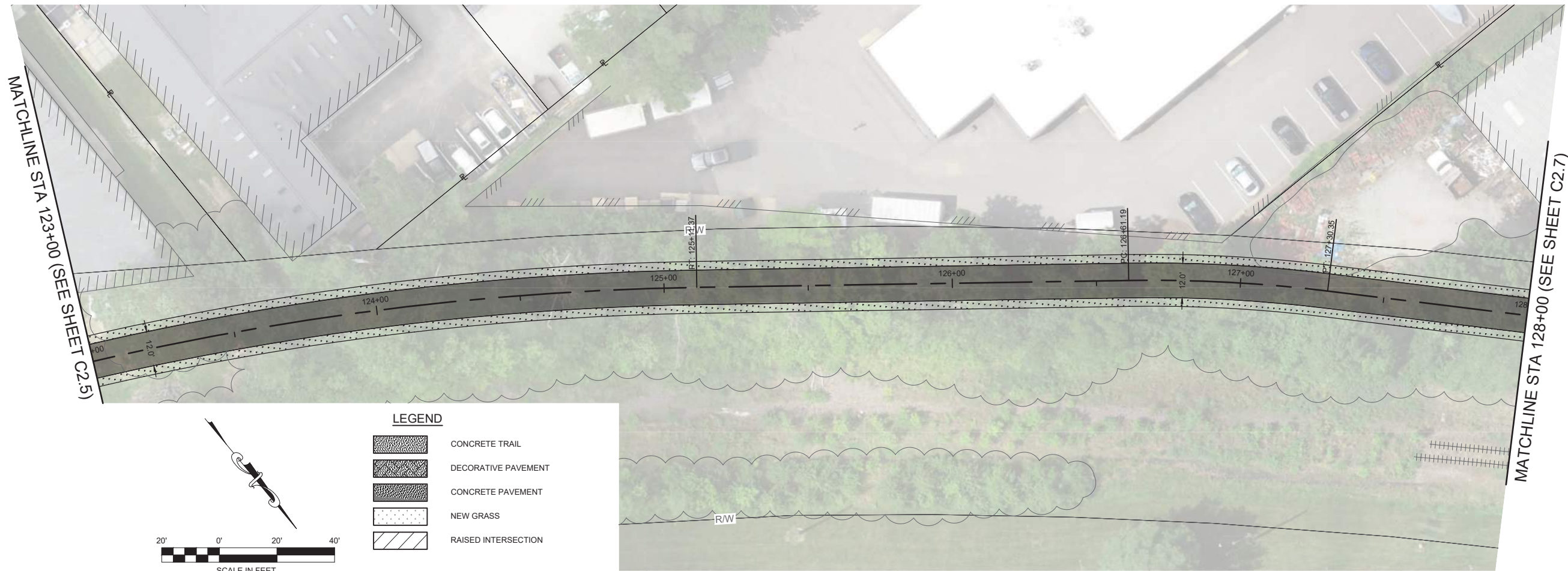


DATE: 1/26/2024

DESIGNED:
DRAWN:
CHECKED:

JOB NO. 2111900

SHEET
C2.4

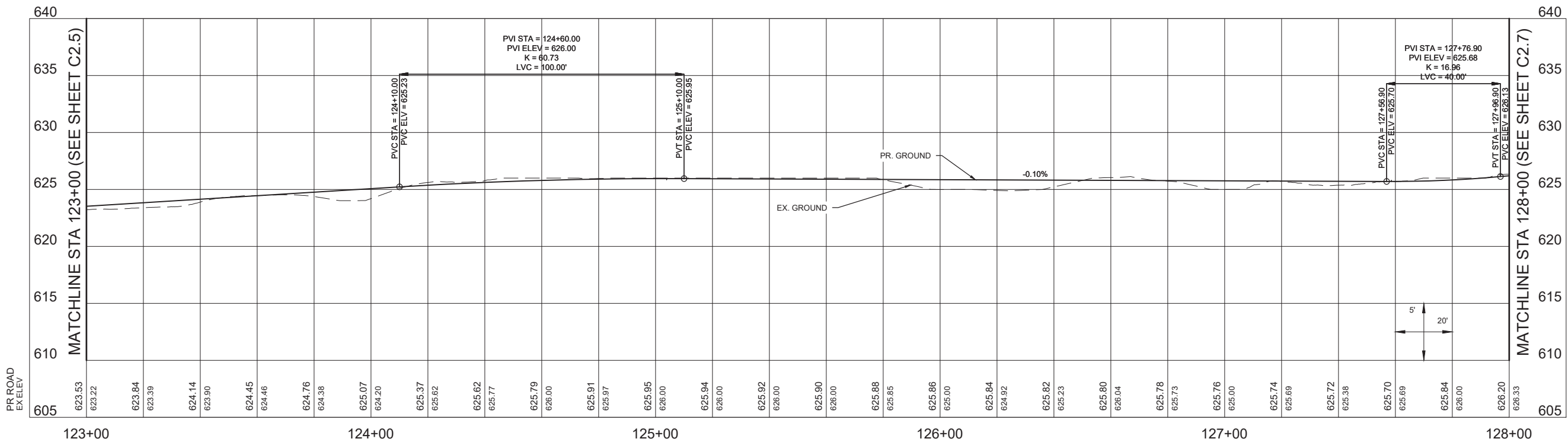


LEGEND

- CONCRETE TRAIL
- DECORATIVE PAVEMENT
- CONCRETE PAVEMENT
- NEW GRASS
- RAISED INTERSECTION

SCALE IN FEET

0' 20' 40'



PRELIMINARY	
Name:	NO.
License No.:	DATE
Expiration Date:	REVISION

HORNER SHIFRIN

401 S. 18TH ST., STE. 400 SAINT LOUIS, MO 63103-2286
 314-531-4321 • FAX 314-531-6868 • WWW.HORNERSHIFRIN.COM

DISCIPLINE: PROFESSIONAL ENGINEERING
 SERVICE AREA: ALL STATES
 EXPIRATION DATE: DECEMBER 31, 2022

**GRANT'S TRAIL -
 CONCEPTUAL DESIGN
 (APPENDIX B)**

PHASE 2 - PLAN SHEETS



DATE:	1/26/2024
DESIGNED:	
DRAWN:	
CHECKED:	
JOB NO.	2111900

SHEET
C2.6

